

IDAHO ENTOMOLOGY GROUP NEWSLETTER

Volume 36, Number 8-11, page 35

August-November 2009

The Idaho Entomology Group (IEG) is composed of professional and non-professional people interested in any facet of the study of insects. Participation is not restricted to Idaho. **Membership dues** are \$5 / year, used to cover costs of the bimonthly newsletter. The Newsletter is distributed in an electronic (pdf) form. If necessary a printed form can be provided for membership dues of \$10 / year. The print option is NOT available for non-domestic membership. Application can be made to any officer (see below) or the Idaho Entomology Group, c/o Orma J. Smith Museum of Natural History, The College of Idaho, Caldwell, ID 83605, USA. **Materials for publication** (e.g. important dates, summaries of meetings, references, publications of members and others, collection records, etc.) should be sent directly to the Editor. Deadline for submission is the 23rd of every second month. Back issues are available at cost (contact: William H. Clark, OJS Museum of Natural History, The College of Idaho, Caldwell, ID 83605). Advertisements are included in the *Newsletter* at the Editor's discretion when items are thought to be within the membership's interest. There is no cost for advertisement, deference in publication is given to members. The IEG is an affiliate of the Idaho Academy of Sciences. **2009 OFFICERS: PRESIDENT**, James K. Ryan, 6614 Newman St., Boise, ID 83704; jameskryan@hotmail.com; **SEC./TREAS.**, Barbara Alexander, 2715 Snowflake Dr., Boise, ID 83706 ☎: 208-344-6017, 208-863-4024 (cell), bmerrill@cableone.net; **NEWSLETTER EDITOR**, Paul Blom, 1107 Grant Ave., Prosser, WA 99350-1115 ☎: 509-788-0181/786-9358, e-mail pblom@BioDataManagement.com.

----- IN THIS ISSUE -----

- 39 [BioDiversity Tools](#)
- 36 [BioQuip Open House](#)
- 38 [Bug Day 2009](#)
- 35 [Calendar](#)
- 35 [IEG Meeting](#)
- 37 [Interesting Literature](#)
- 37 [Invasive Ants](#)
- 41 [Meetings of Possible Interest](#)
- 36 [Obituaries](#)
- 35 [OJS Natural History Museum Notes](#)
- 38 [Of Regional Interest](#)
- 35 [Publications by Members](#)
- 42 ['Who Are They' Contest](#)

----- CALENDAR -----

- December
- 5 OJS Museum Workday
 - 5 IEG Holiday Gathering and Meeting
 - 13-16 Annual Meeting Ent. Soc. Amer. Indianapolis

----- IEG MEETING -----

Pat and Al Gillogly will host the Idaho Entomology Holiday Gathering and Meeting (including the College of Idaho Museum Volunteers) on Saturday, December 5, 2009. Festivities will follow the December Museum Workday and begin at 1800 hrs (= 6PM).

Their home is located on the Boise Bench at N43° 37.260' W116° 14.693', elevation 2750'; the traditional designation is 1711 N. Fowler Street, Boise (but don't bother to look for a mailbox – they don't receive mail at the house!). This is just 2.5 blocks NW of the corner of Fairview and Orchard, and is only a couple blocks from Paul and Kathy Castrovillo's home (for reference only).

In accordance with tradition, this will be a potluck affair with BYOB. The Gilloglys will provide a meat dish and would very much appreciate RSVPs to 377-3567 or gillogly@cableone.net so that they can gauge the quantities needed...but come anyhow if you forget to Respondez Vous.

A MAP can be found through MSN. However, it doesn't indicate that the house is on the west side of the street, about halfway down the block....the second to last house before reaching Mountain View:
[http://mappoint.msn.com/\(nkqnfzwwqxopsgy1j2l4vabs\)/map.aspx?L=USA&C=43.62040%2c-116.24463&A=7.16667&P=\[43.62040%2c-116.24463|1|1711+Fowler+St%2c+Boise%2c+ID+83706-1729|L1|](http://mappoint.msn.com/(nkqnfzwwqxopsgy1j2l4vabs)/map.aspx?L=USA&C=43.62040%2c-116.24463&A=7.16667&P=[43.62040%2c-116.24463|1|1711+Fowler+St%2c+Boise%2c+ID+83706-1729|L1|)
There is also a Google Earth image of the location on page 40.

Feel free to bring entertaining/educational slides, files and stories to share. If you will need computer or slide projectors or a slide screen, please let Al know well in advance (we don't have them, and will have to scrounge them up!). Presentations that are tentatively expected, so far, will be on western Panama (Chiriqui) and back-country Baja California Norte.



----- PUBLICATIONS BY MEMBERS -----
Lysne, Steven J., and **William H. Clark**. 2009. Mollusk survey of the lower Bruneau River, Owyhee County, Idaho, U.S.A. *American Malacological Bulletin* 27.1/2:167-172.

----- O.J. SMITH -----

**MUSEUM OF NATURAL HISTORY NOTES
(THE COLLEGE OF IDAHO)**Museum ☎: (208) 459-5507,
email bclark@collegeofidaho.edu.<http://www.collegeofidaho.edu/campus/community/museum/>**** MUSEUM MONTHLY VOLUNTEER WORKDAYS**For the Workday Schedule see the Museum's NEW Event Web Page:
<http://www.collegeofidaho.edu/campus/community/museum/event.htm>

The Museum is open all day on Workday Saturdays, 8 AM until late afternoon. Enter via west basement door. We have a variety of Museum tasks that need volunteer assistance. We currently need someone to construct wooden bases for displays. We have tasks for students and non-students alike. We need volunteers to assume a variety of Museum duties and responsibilities. We have the following needs: Plywood, particle board, Masonite, 1x2" stock lumber, electrical fixtures, bookshelves for journals and funds for specific Museum projects.

We supply coffee and hot water for drinks as well as a taco lunch for volunteers. We usually have a brief research seminar at noon. The Museum collects aluminum for recycle. Please leave in Museum or contact Bill Clark (208-375-8605), John Keebaugh (208-459-5507), or Dr. Eric Yensen (208-459-5331).

Bill Clark

****COMING 2009 LUNCH SEMINARS**

- Oct 3 Dr. Barbara Ertter - "American Iranian Botanical Program."
Nov 7 Amy Truksa - "Water on Mars, Past and Present."
Dec 5 Richard Salisbury - "Idaho land shells, Fresh water snails and a few Marine cousins."



photo Dave Ward

Hey Bill [Clark],

We have a lot of formaldehyde that we will not be using in the near future. Could OJS museum use any? Dorene E. MacCoy (USGS), demaccoy@usgs.gov.

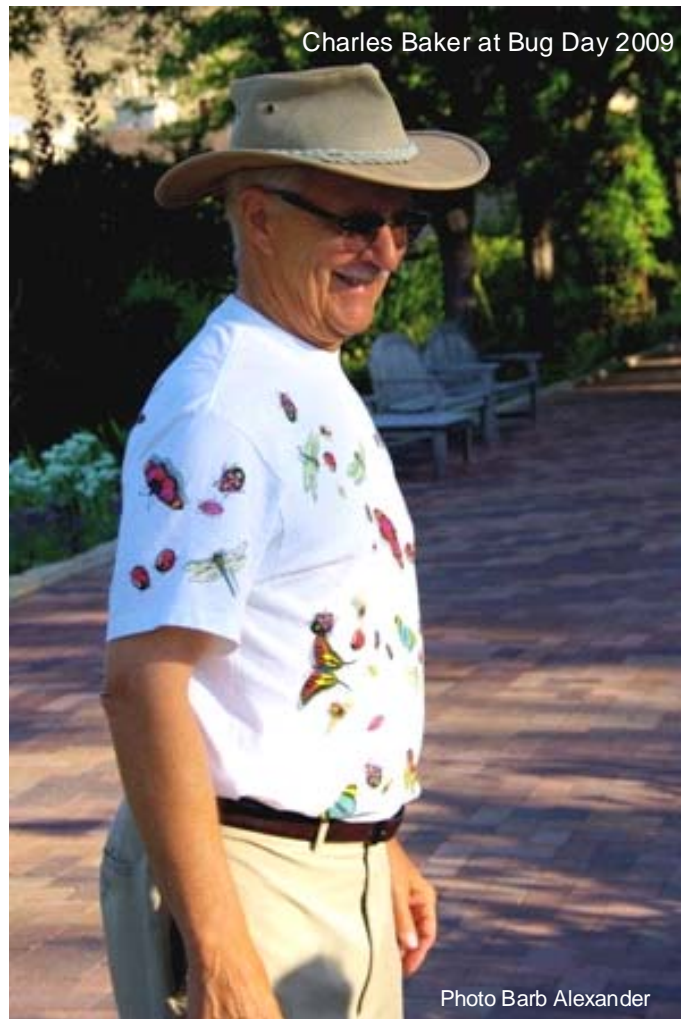
----- OBITUARY -----

I have some very sad news; **Rob Roughley** passed away at home. He had a debilitating stroke in 2007 but had partially recovered and returned to work. He had been doing well lately and his passing was sudden and unexpected. Rob was the Curator of the J. B. Wallis of Entomology at the University of Manitoba and an expert in dytiscid beetles. Please pass this on to his friends and colleagues. He will be missed!

Andrew Smith

Former President and Executive Secretary of the Idaho Academy of Science **Jack L. Dalton** passed away on Sunday, August 16. The obituary that appeared in the Idaho Statesman is available at:

<http://www.legacy.com/obituaries/idahostatesman/obituary.aspx?n=jack-l-dalton&pid=131555683>. There was a memorial service, Thursday, August 20 at 2 p.m. at Whitney United Methodist Church, 3315 W. Overland Rd. in Boise.



Charles Baker at Bug Day 2009

Photo Barb Alexander

----- BIOQUIP OPEN HOUSE -----

If you cannot make the IEG gathering and find yourself in CA you might be interested in... "We hope you'll be able continued on page 42

----- INTERESTING LITERATURE -----

Berry, Pam (Ed). 2009. **Biodiversity in the Balance - Mitigation and Adaptation Conflicts and Synergies**. ISBN: 978-954-642-516-4, 235x165, full-color, illustrated by maps, drawings, graphs, tables, Ppb, 300pp., In English. Price: EUR 40.00. You can order online at <http://pensoft.net/newreleases/14698.htm> or send order to orders@pensoft.net or fax +359-2-8704282

Scholtz, C/ Davis, A/ Kryger, U. 2009. **Evolutionary Biology and Conservation of Dung Beetles**. ISBN: 978-954-642-517-1. 235x165, full-color, richly illustrated by photos, maps, drawings, graphs, tables. In English. Ppb, 566pp. Price: EUR 70.00. You can order online at <http://pensoft.net/newreleases/14699.htm> or send order to orders@pensoft.net or fax +359-2-8704282

Resources for the Kids.

The **International Society for Pest Information (ISPI)** has just published an expanded and updated issue of its 'Pest Directory' database (September 2009). The database is available as CD for installation on a PC (about 400 megabytes of disk space and Windows 98 or higher are needed). For more information see our website <http://www.pestinfo.org/cds.htm>.

Backhuys Publishers B.V., The Netherlands has a large number of recent acquisitions of Coleoptera texts. For a list and ordering information contact backhuys@backhuys.com, or visit www.Backhuys.com.

The ESA Governing Board has approved the creation of the *Journal of Integrated Pest Management (JIPM)*. JIPM will be an online-only, open-access, extension-oriented, peer-reviewed, pest-management journal. Emphasis will be on pest biology and ecology profiles, emerging IPM issues, and consensus-based pest-management recommendations.

A 2010 print & online or online only subscription provides access to all the fully searchable legacy content – over 9 volumes, 38 issues – and growing! To learn more about this journal and to subscribe, please visit <http://www.liebertpub.com/vbz>.

The deepseated nature of taxonomy: http://www.nytimes.com/2009/08/11/science/11naming.html?_r=2&pagewanted=2&8dpc. Al & Pat Gillogly

----- INVASIVE ANTS -----

The International Invasive Ant Management Workshop is now organized and accepting applications.

This three day workshop on the management of invasive ants will be held in Darwin, Australia on 27-29 April 2010. This focused workshop aims to facilitate networking among people involved in invasive ant management, as well as to improve the incorporation of research and ant biology into management.

The workshop will be hosted by CSIRO, with accommodation at the Mirambeena resort, Darwin city.

This workshop will be limited to 60 people due to restricted facility size. As such, priority will be given to people who are actively involved in decision making and ground work of invasive ant management, especially eradication programs.

Participants will be expected to provide a brief (30 second) presentation of themselves and their work, and are also encouraged to propose a longer talk (15-20 minutes) of any aspect of invasive ant management that they deem of relevance to the workshop.

All details of the workshop can be found at <http://www.terc.csiro.au/iiamw/>

Roger Rosentreter



Barb Alexander, Mary Clark, Margaret Stallnecht at Bug Day 2009 photo Dave Ward



Dave Ward at Bug Day 2009

Photo Barb Alexander

----- BUG DAY 2009 -----

Where can you participate in Insect Olympics, purchase edible insects, catch live insects and then take them to an Entomologist for identification? Bug Day, of course! Held each August at the Idaho Botanical Garden, Bug Day is co-sponsored by the garden and the Orma J. Smith Museum of Natural History at The College of Idaho. Geared toward the younger crowd, there are several activities and displays designed to interest the budding entomologist. Bug Day was held on August 22 and attracted over 1,100 people this year.



Al Gillogly and Dave Ward at Bug Day 2009

photo Barb Alexander

Several Museum volunteers participated including: Teresa Vail ('10), Steve Bouffard, Al Gillogly, Mary Clark ('68), Barbara Alexander, Jim Ryan, Dave Ward ('78), and Margaret Stallnecht. Some volunteers staffed a Museum Gift Shop, selling edible bug candy, bug nets, bug boxes, t-shirts and other items to raise funds for Museum operations. Others took a large display of insects from the Museum for Bug Day participants of all ages to view while others manned the "Ask An Entomologist" table where attendees took insects for identification. Museum volunteer Elizabeth Dickey is the Education Director at the Idaho Botanical Garden and is

continued on page 41

----- CLARK IN BAJA - AGAIN?! -----

Clark Participates In Expedition Into Remote Baja California Mountains.

William H. Clark, Director, Orma J. Smith Museum of Natural History at the College, recently spent 18 days in Baja California (his 5th expedition there since March 27th retirement! [We are hoping for more info and images from all 5 of these trips - Editor]). This trip included an 11 day expedition into very remote desert mountains, the Sierra Libertad. The only access into the area is by foot or pack animal. The expedition consisted of five scientists, Clark being the only entomologist and person from the United States invited to participate. A cook, a representative from the Valle de los Cirios Natural Area, and four cowboys rounded out the expedition. Fourteen animals (horses, mules, and burros) provided transportation and packed the gear. The expedition was paid for by a Mexican research grant to explore the biodiversity of remote areas of the Peninsula. Results have already yielded a spider genus new to the Peninsula and several ants and beetles of interest are being examined now. Clark notes that this trip may redefine "remote" for him, as they saw no other person and no vehicle trails, etc. on the trip. Clark also serves as Investigador Adjunto, Museo de Artrópodos del CICESE, in Ensenada.



----- OF REGIONAL INTEREST -----

Oregon Zoo's three African Lions Have Moved Into Their New Enclosure. Portland, OR - Home, sweet home! The Oregon Zoo's three African lions have moved into their new enclosure at the highly anticipated Predators of the Serengeti exhibit, opening to the public on Sept. 12. See more at http://www.zandavisitor.com/newsarticle-2085-Oregon_Zoo's_three_African_Lions_Have_Moved_Into_Their_New_Enclosure.

continued on p. 41



Elizabeth Dickey at Bug Day 2009
Photo Barb Alexander

----- BIODIVERSITY TOOLS -----
<http://spatialnews.geocomm.com/dailynews/2009/nov/11/news2.html>

SuperGeo Technologies, the leading global provider of complete GIS solutions, develops a Biodiversity GIS application for users to query species information and share survey data by Internet GIS.

In order to efficiently integrate all the survey data from different individuals, groups or websites, Endemic Species Research Institute intends to develop "Biodiversity Geographic Information System", to construct a sharing platform by using Internet GIS. This project aims to offer users a more convenient query interface, data management and survey tools, and to attract users to use and provide more valuable survey data.

Through the Internet platform, users are able to connect to other databases. The personalized survey data management software offers users the customized management functions. The website also provides the links to statistic data and distribution chart of survey data, as well as the survey table sharing function. In addition, a contribution quantification function is created for users to increase their willingness and convenience to contribute survey data. Therefore, every person could

easily be a biological surveyor.

The system is developed by means of across-browser to support the mainstream browsers including Internet Explorer of Microsoft, Firefox of Mozilla, Safari of Mac and Chrome of Google. Thus, users with different tools are all taken care.

The platform mainly provides three functions.

1. Query Species - "Taiwan Biodiversity Network" is the main system in the project. It provides various query methods, such as key word query, geographical range query, conditional filtering query and map query. Users can clearly understand the information of the species matching the searching condition through the simple legends.

2. Uploading Data - This system provides three methods to collect data, including On-Line filling, uploading survey pictures, and huge data collection with Microsoft Excel software. On-Line filling not only allows surveyors to fill the data to the interface, but also supports the administrator to fix and design the filling interface through the manager interface. The uploading picture function enables the public to upload their taken pictures of creatures. The Microsoft Excel uploading function is particularly developed for users who own huge quantities of data. Through Excel, the huge data can be imported to the system in batch to reduce the same data duplicated input.

3. User Information - The system offers the registered users several services according to the information that users have provided, including user profile, survey data, survey album, tracks and statistic data. This allows each user to see how their data are utilized and thus may arouse users' interests to offer more data.

The integrated application of Internet GIS and biodiversity data can help users understand biodiversity distribution efficiently. The system also contributes to land protection and conservation and also assists the prediction and alarm mechanism for climate change and short-term environment change. Also, the regional ecological features can be highlighted to provide the Government with the regional feature information to increase the citizen's green income.

For more information, please visit http://www.supergeotek.com/Library_1_200911.aspx

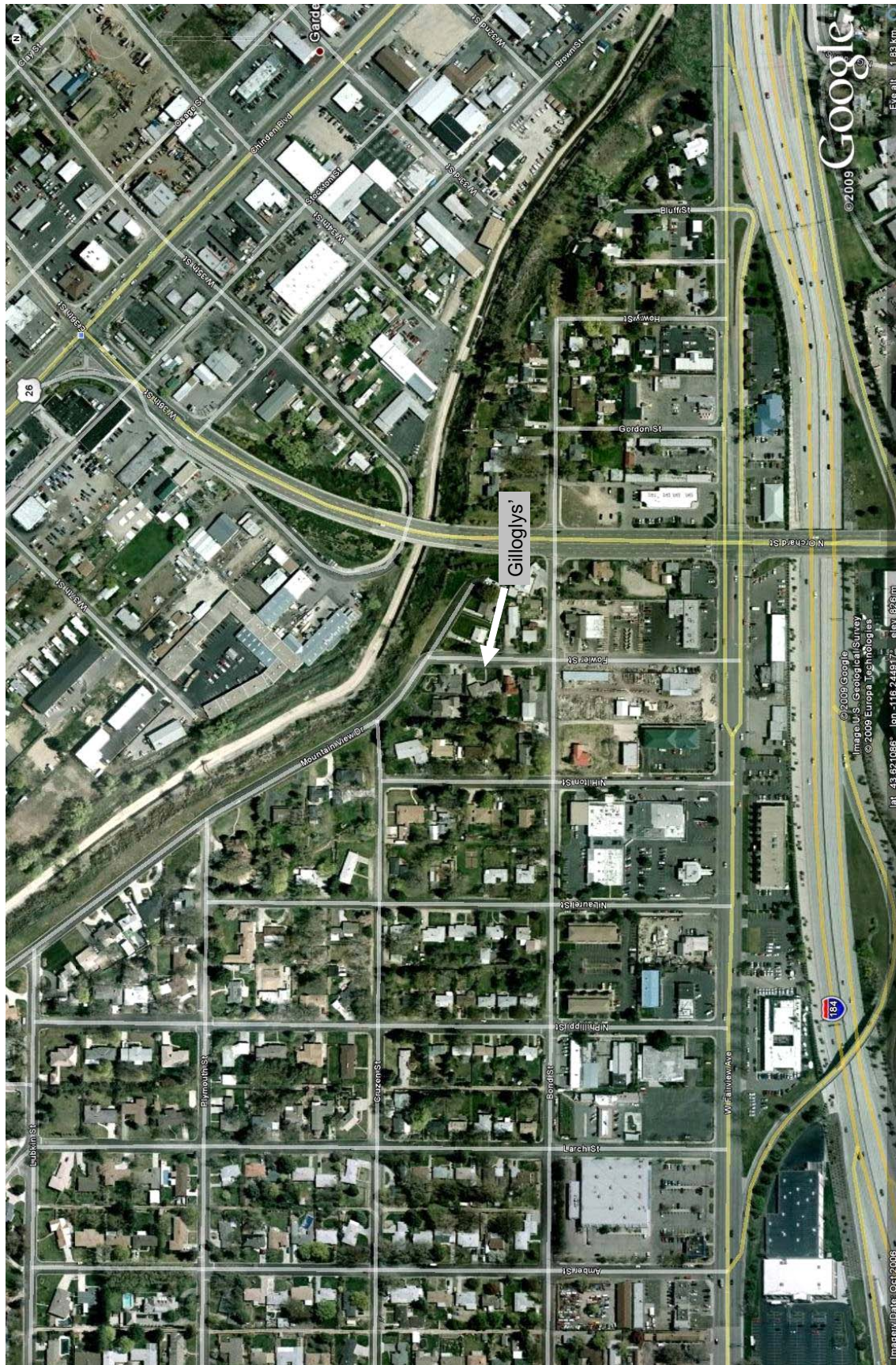


Invertebrate tattoos featured at Bug Day 2009

Photo Barb Alexander

Map to Gillogys' Home for Holiday Gathering.

Full announcement on p. 35



----- BUG DAY 2009 -----

Bug Day, continued from p. 38

instrumental in putting together Bug Day.

As always, there were LOTS of questions from kids and adults alike, lots of comments like, "Oh my gosh, look at that cool bug!" and , "Oh my gosh, look at that gross bug!" and possibly the most frequent comment, "Are those bugs REAL?!"

The O J Smith Museum is privileged to co-sponsor this great community event with the Idaho Botanical Garden. As usual, a great time was had by all.

submitted by Dave Ward ('78)



---- MEETINGS OF POSSIBLE INTEREST --

Aquatic Sciences: Global Changes from the Center to the Edge. Joint Meeting with ASLO & NABS, June 6-11, 2010, Santa Fe, New Mexico.

<http://aslo.org/santafe2010/>

Maggot Therapy. For anyone wishing to debride deep wounds with maggots, an important seminar was held at the Paris Hotel in Las Vegas September 10-12. The Wound Care education institute sponsored this 2009 Wild on Wounds national conference. Other cutting edge wound care topics include bariatric skin and wound care, wheel chair boot camp, and more.

<http://quest.event.com/events/info/invitation.aspx>

Jim Ryan

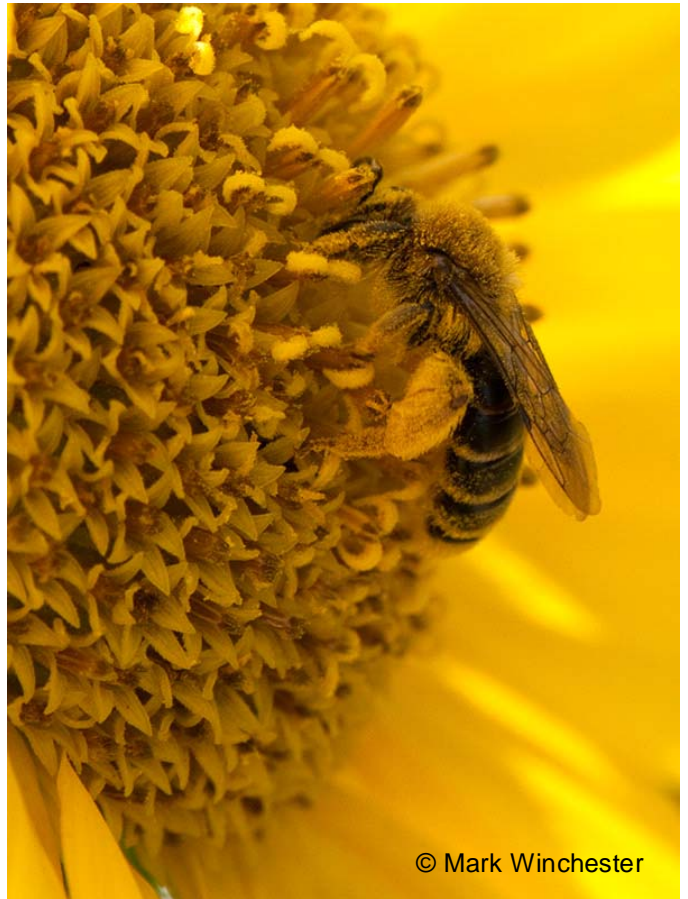
----- OF REGIONAL INTEREST -----

continued from p. 38.

I'd like to introduce myself as the ecologist at Great Basin National Park. I'm trying to get the park involved in the study of some non-traditional organisms using a method called a bioblitz. The Bioblitz is a short, intensive survey of a taxa, this year of Coleoptera, that will be done in one weekend. The park doesn't have any entomologists on staff, so we are reaching out trying to get people who are experienced to help. The Southern Utah University Entomological Club has committed to helping, and I am hoping you might also be willing.

The Great Basin National Park held a **Beetle Bioblitz** September 11-13, 2009. It consisted of a 24-hour collecting period from noon Saturday to noon Sunday. There were beetle workshops, presentation, and processing times.

Gretchen Baker, Ecologist, Gretchen_Baker@nps.gov.



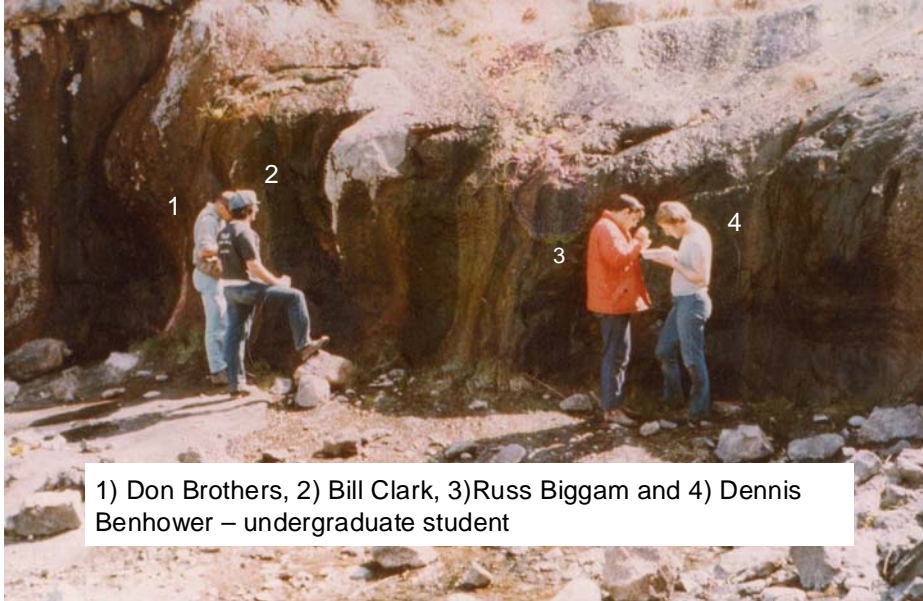
© Mark Winchester

----- MORE INTERESTING LITERATURE --

Vector-Borne and Zoonotic Diseases is the first, authoritative peer-reviewed journal dedicated to diseases transmitted to humans by insects or animals. The Journal covers a widespread group of vector and zoonotic borne diseases and provides a unique platform for basic and applied disease research.

----- WHO IS THAT ! -----

Russ Biggam sent in this photo which was posted for your guessing in the last issue. The hint was Hot Creek Falls, April 1976. Unfortunately, your Editor received no guesses, so assuming you all were stumped here are the



1) Don Brothers, 2) Bill Clark, 3) Russ Biggam and 4) Dennis Benhower – undergraduate student

data:

----- BIOQUIP OPEN HOUSE -----

continued from page 36
to attend our Annual Open House on Saturday, December 5th (1100 - 1700 hrs, 2321 Gladwick Street, Rancho Dominguez, CA 90220, 310-667-8800). In

-- JOHNNY ASILID DANGER FORCE NINE

This cartoon was in a letter from my daughter (she is attending Boise State). This is only her work. The first few 'Johnny Asilid DANGER FORCE NINE' strips were both of us and I believe IEG included one or two. This is Jenny Fothergill alone and I thought it may be of interest. earlier this year, It is scanned out of a letter and slightly retouched- I hope the quality is acceptable. Kent – 30 April 2009



addition to The Ultimate Show - Yours!, we are arranging for a book signing by Jerry Powell and Paul Opler, co-authors of Moths Western North America, published catalog #3361. Copies of the book will be available for purchase, or you of may bring your copy for autographing if you have already purchased this excellent new book.

"Please bring a glass-top drawer or display case filled with your favorite, most beautiful, local, unusual, colorful, or bizarre insects and/or spiders to the Open House.

"Limit - Only one drawer or display case per guest

"Size - Maximum size limit is 20" x 24".

"BioQuip will have tables to display your drawer or case with an easel placed behind your exhibit.

"Bring an 8-1/2 x 11" sheet of paper with your name and some information about your display to be put on the easel

"There will be a contest with three winners receiving merchandise certificates, including one for a display case or drawer submitted by

someone 18 years or younger. Winners will be announced at 4:30. Winners need not be present to claim prizes.

"In order to plan for the number of tables needed to showcase drawers and display cases, BioQuip needs to know in advance if you will be bringing a drawer or display case to the Open House. Please let us know you'll be bringing a drawer or display case."